

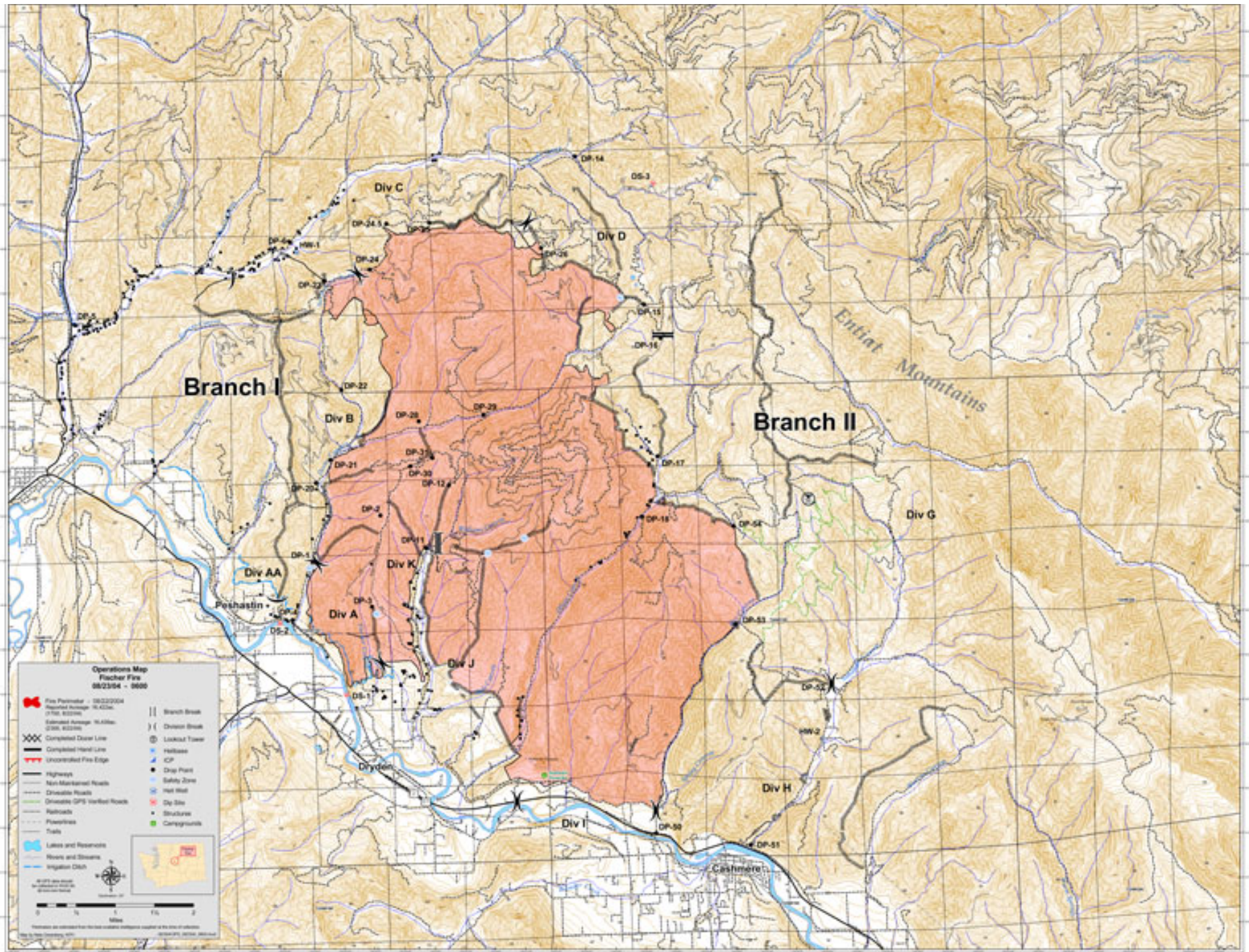
# *Unit 14*

## **Situation/Plans Map**

# Situation Plans Map: *Unit Objectives*

By the end of this unit the students will:

- List the purpose and uses of the Situation/Plans Map.
- List the critical elements of a Situation/Plans Map.
- Prepare a Situation/Plans Map.



The purpose of the *Situation/Plans Map* is to provide a geographic tool for the Plans Meeting to develop incident strategies and alternatives.

# Situation/Plans Map: *Critical Features*

- Title, including valid date and time
- Incident perimeter
- Data and time produced
- Division/Branch breaks and labels
- Transportation routes
- Safety hazards
- Fire points (drop points, water sources etc.)

# Situation/Plans Map: *Critical Features*

- Scale
- Symbol legend
- North indicator
- Geographic reference
- Authorship

# Situation/Plans Map: *Optional Features*

- Orthoimagery base
- Shaded relief base
- Vicinity map

# Three map products used in a Plans Meeting



# Situation Plans Map: *Unit Review*

By the end of this unit the students will:

- List the purpose and uses of the Situation/Plans Map.
- List the critical elements of a Situation/Plans Map.
- Prepare a Situation/Plans Map.